



SECURING SOLID GROUND

PROJECTS



▪ 75 MMCFD CRYO PLANT IN CUSHING, OK



▪ 100 MMCFD CRYO PLANT IN CASHION, OK



CHEROKEE NATION
Tribal Employment Rights Office
Cherokee Nation Certified Indian-owned Business

HUBZone
Historically Underutilized Business Zones



SCOPE OF SERVICES

DESIGN BUILD I&E

- CRYOGENIC PLANTS
- GAS HANDLING FACILITIES
- PETRO CHEMICAL
- COMPRESSOR STATIONS
- E-HOUSES
- UL508A CONTROL PANELS
- MECHANICAL INTERFACE
- POWERLINE CONSTRUCTION
- COMMISSIONING & START-UP



OWASD
CHEROKEE NATION
Tribal Employment Rights Office
Cherokee Nation Certified Indian-owned Business

HUBZone
The Nation's Hub for Small Business



CRYOGENIC PLANTS

- 75 MMCFD CRYO PLANT IN CUSHING, OK
- 100 MMCFD CRYO PLANT IN CASHION, OK
- 200 MMCFD CRYO PLANT IN COALGATE, OK

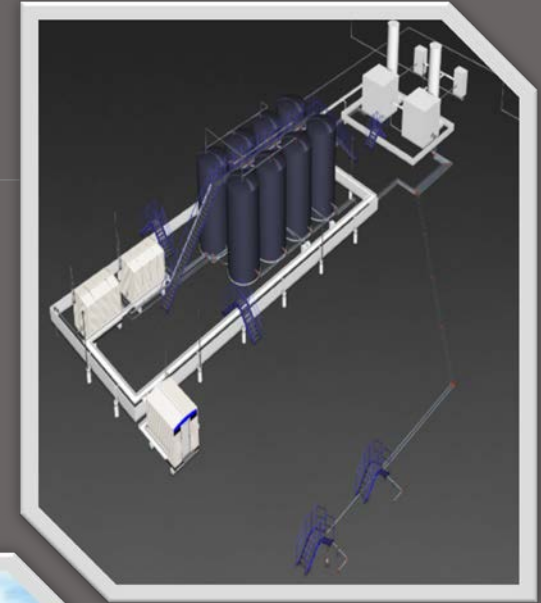


CHEROKEE NATION
Tribal Employment Rights Office
Cherokee Nation Certified Indian-owned Business

HUBZone
Other Fully Qualified Business Zones



PETRO CHEMICAL



CHEROKEE NATION
Tribal Employment Rights Office
Cherokee Nation Certified Independent Business

HUBZone
Eligible U.S. Economic Development Zone



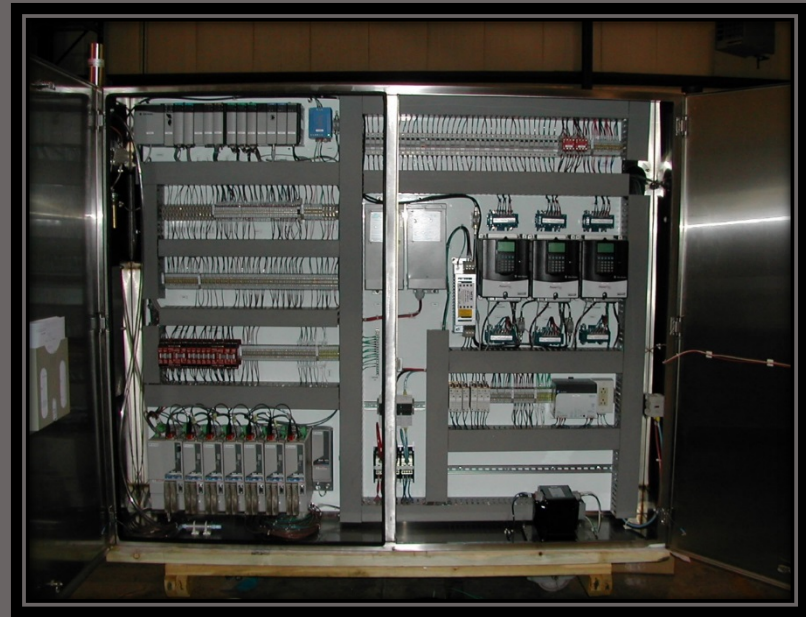
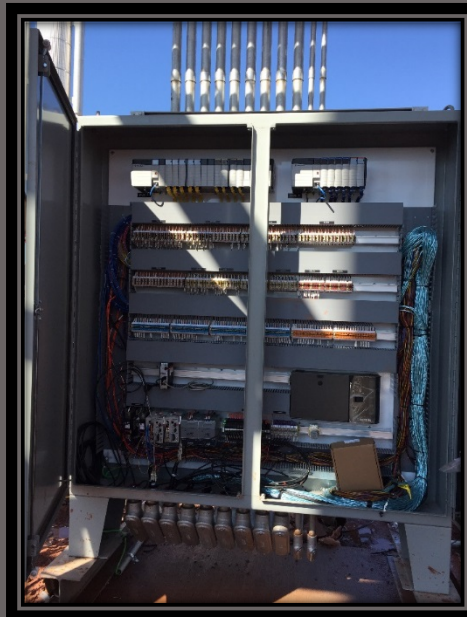
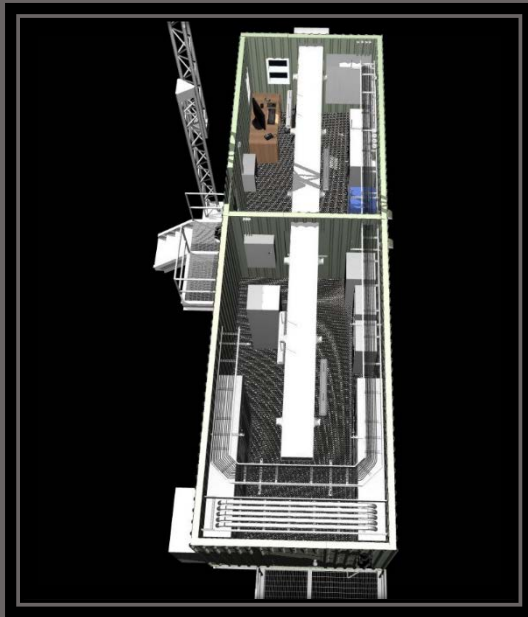
COMPRESSOR STATIONS



CHEROKEE NATION
Tribal Employment Rights Office
Cherokee Nation Certified Indian-owned Business



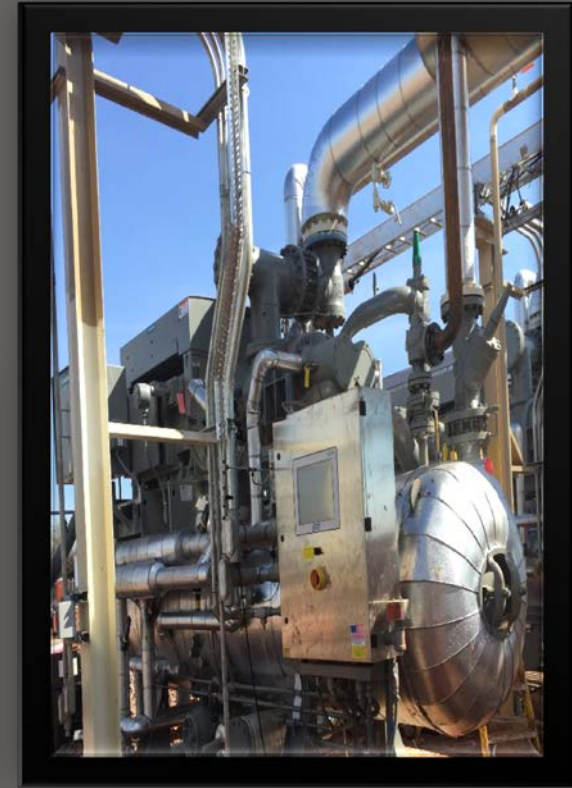
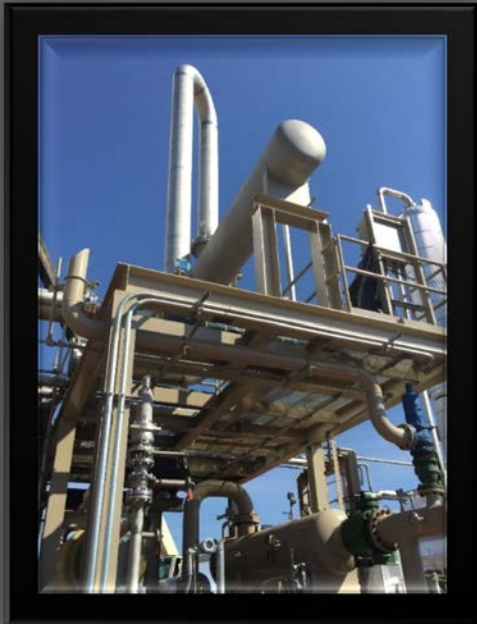
UL508A CONTROL PANELS



OWB IDP
CHEROKEE NATION
Tribal Employment Rights Office
Cherokee Nation Certified Indian-owned Business



MECHANICAL INTERFACE



CHEROKEE NATION
Tribal Employment Rights Office
Cherokee Nation, Certified Indian-owned Business

HUBZone
Historically Underutilized Business Zone



POWERLINE CONSTRUCTION

- Various NEMA ratings
- We construct many types of control panels, both AC & DC
- Overhead construction
- Underground construction
- High voltage terminations



CHEROKEE NATION
Tribal Employment Rights Office
Cherokee Nation Certified Indian-owned Business

HUBZone
Historically Underutilized Business Zones



COMMISSIONING & START-UP

- Calibrated loop checks
- Instrument Install
- Professional Tubing Install
- I&E Technicians



OWB DSP
CHEROKEE NATION
Tribal Employment Rights Office
Cherokee Nation Certified Indian-owned Business

HUBZone
Historically Underutilized Business Zones



SYSTEMATIC BIDDING

- **Process Ensures Accuracy**
- **No Hidden Costs**
- **Fewer Change Orders**
- **Industry Standards**
- **Detailed Take Offs**
- **Everyone Saves Time & \$\$\$**


[illegible][illegible]

fault					
orse Custom for Customer Out					
Add Down View: Phase Bid Item <input type="button" value="Add"/> <input type="button" value="Edit"/> <input type="button" value="Delete"/>					
Phase					
Bid Item	Total Material	Total Hours	Total Labor \$	Total	
P-600	298 22	8 50	308 76	856 38	
P-601	298 22	8 50	308 76	856 38	
P-602	298 22	8 50	308 76	856 38	
P-603	597 41	22 77	827 13	2 021 07	
P-604	1 182 23	28 89	1 049 44	3 139 24	
P-620	2 358 32	64 78	2 353 15	6 642 58	
P-621	984 03	43 29	1 572 52	3 636 78	
P-366	427 82	15 84	575 39	1 422 54	
P-366A	119 34	3 97	144 21	372 95	
P-366B	1 024 88	19 36	703 26	2 418 96	
P-366C	157 87	2 10	76 28	325 66	
P-367	427 82	15 84	575 39	1 422 54	
P-367A	119 34	3 97	144 21	372 95	
P-367B	1 024 88	19 36	703 26	2 418 96	
P-367C	157 87	2 10	76 28	325 66	
P-368	427 82	15 84	575 39	1 422 54	
P-368A	119 34	3 97	144 21	372 95	
P-368B	1 024 88	19 36	703 26	2 418 96	
P-368C	157 87	2 10	76 28	325 66	
P-373	427 82	15 84	575 39	1 422 54	
P-373A	119 34	3 97	144 21	372 95	
P-373B	1 024 88	19 36	703 26	2 418 96	
D-173A	147 87	2 10	76 28	325 66	
Revised Totals	78 525 07	2 217 70	80 558 45	224 346 13	
Remainder					
Equal Price	78 525 07	2 217 70	80 558 45	224 346 13	
Job Info	Notes	Takeoff	Extension	Dir/Lb	Incl/Lb
				Lbfac	Lbfsc



GW20 DMP
CHEROKEE NATION®
Tribal Employment Rights Office
Cherokee Nation Certified Indian-owned Business



The background image is a photograph of an industrial facility, likely an oil refinery or chemical plant. It features a tall, vertical distillation column with multiple trays and ladders. To the right, there is a large, horizontal storage tank. The entire scene is bathed in a strong red light, creating a dramatic and somewhat ominous atmosphere. The image is framed by a thick, dark grey border that has a slight curve at the top and bottom, resembling a stylized oval or a lens effect.

Morse Electric Incorporated is a national premier industrial electrical contractor based in Oklahoma. MEI specializes in Mechanical Interface, Electrical Services, Automation, and Instrumentation on Midstream & Upstream projects.

918.913.9572
info@morseelectricinc.com